

## EXHIBITIONS & DISPLAYS



**COLOUR**  
Fri 21 Mar to Sun 19 Oct 2025  
**ROYAL PAVILION**  
Free with Royal Pavilion admission, members free  
Embark on a captivating chromatic promenade through the Royal Pavilion with COLOUR. With exciting artist collaborations, workshops and events to enhance the experience, this is a must-see exploration of the power and beauty of colour.

**WILDLIFE PHOTOGRAPHER OF THE YEAR**  
Continues to 16 Mar 2025  
**BRIGHTON MUSEUM**  
Free with Brighton Museum admission, members free  
See over 100 extraordinary photographs from around the world showcased in the 59th edition of this prestigious exhibition from the Natural History Museum, London.

**WINTER AT THE BOOTH MUSEUM**  
Continues to 19 Mar 2025  
**BOOTH MUSEUM**  
Free admission  
Join us as we take a look at folklore of the animal world in this seasonal display.

**THE MECHANICAL CIRCUS**  
Extended to 21 Apr 2025  
**HOVE MUSEUM**  
Free admission  
Hove Museum of Creativity proudly presents ten circus-themed automata. The push of a button brings the performers to life in a fusion of whimsical art and robotic engineering.

**BRIGHTON & HOVE ALBION: A FIRST YEAR IN EUROPE**  
Continues to 27 Apr 2025  
**PRINTS & DRAWINGS GALLERY, BRIGHTON MUSEUM**  
Free with Brighton Museum admission, members free  
Celebrate Albion's historic 2023/24 campaign when the club played in Europe for the first time in its history.

**WHAT'S IN THE BOX?**  
Continues to Spring 2025  
**HOVE MUSEUM**  
Free admission  
Inspired by Jonathan Wright's Constellation sculpture, the display's theme is 'Sparkle & Shine'.

**SEE THE SEA**  
Continues to Spring 2025  
**FINE ART GALLERY, BRIGHTON MUSEUM**  
Free with Brighton Museum admission, members free  
This family-friendly display of paintings includes dramatic seascapes and beachside scenes.

**SECRETS AND STORIES**  
A series of short gallery talks and pop-ups presented by members of our collections team.

**THE INS AND OUTS OF COLLECTING**  
Thu 23 Jan  
**HOVE MUSEUM**  
11.30am Free  
Discover how and why museums collect things.

**WILDLIFE PHOTOGRAPHER OF THE YEAR - A CLOSER LOOK**  
Tue 18 Feb  
**EXHIBITION GALLERY, BRIGHTON MUSEUM**  
11.30am Free with Brighton Museum admission, members free  
A closer look at some of the animals featured in the photographs.

**MID-CENTURY MILLENNIAL**  
Thu 27 Mar  
**HOVE MUSEUM**  
11.30am Free  
Explore what makes us look back and why certain design trends take hold.



**BRIGHTON IN THE 1960S AND '70S**  
Thu 24 Apr  
**HOVE MUSEUM**  
11.30am Free  
A colourful slide show of Brighton as it was 50 to 60 years.

**LGBTIQ+ HISTORY CLUB @ BRIGHTON MUSEUM**  
Sun 23 Feb, 30 Mar & 27 Apr  
**MUSEUM LAB, BRIGHTON MUSEUM**  
2-4pm book in advance at [queerheritagesouth.co.uk](http://queerheritagesouth.co.uk)  
An afternoon of talks on all things to do with local(ish) queer heritage accompanied by tea, cake and friendly conversation.

**PRESTON MANOR: A WOMAN'S WORLD**  
Fri 7 Mar  
**PRESTON MANOR**  
6pm £22, £18 members (includes welcome drink)  
Celebrate International Women's Day with stories of the extraordinary women from the manor's past and the trailblazing women of Brighton & Hove.



## TOURS



**GUIDED TOURS**  
With twelve different tours across our sites, there's a treat in store for everyone! For the full list of all our tours and to book your tickets, [brightonmuseums.org.uk/guided-tours/](http://brightonmuseums.org.uk/guided-tours/)

**AN INTRODUCTION TO THE ROYAL PAVILION**  
Every Saturday  
**ROYAL PAVILION**  
2pm £25 (includes a day pass to the Royal Pavilion), members and annual pass holders £10  
Explore the Chinese-inspired pleasure palace of the extravagant King George IV.

**BEHIND CLOSED DOORS TOUR - GROUND FLOOR**  
Wed 8 Jan, 12 Feb, 12 Mar & 9 Apr  
**ROYAL PAVILION**  
5-6pm £20, members £15  
Go behind the scenes of the ground floor.

**BEHIND CLOSED DOORS TOUR - UPPER CHAMBERS**  
Wed 29 Jan, 26 Feb, 26 Mar & 23 Apr  
**ROYAL PAVILION**  
5-6pm £20, members £15  
Go behind the scenes of the first floor.

**BASEMENT & TUNNEL TOURS**  
Tue 14 & 28 Jan, 11 & 25 Feb, 11 & 25 Mar, 8 & 22 Apr & every Sat  
**ROYAL PAVILION**  
10.30-11.30am, £30, members and pass holders £15 (includes entry to the Royal Pavilion at end of tour)  
Discover more about life below stairs for Royal Pavilion servants and see the vaulted basement used as an air raid shelter during WWII.

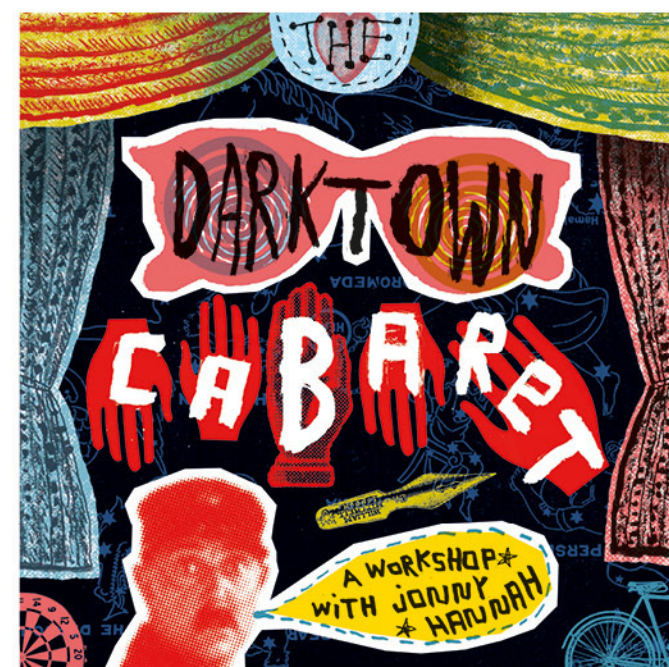


**TILL DEATH US DO PART: DARK ROMANCE - BEHIND THE SCENES TOUR**  
Fri 14 Feb  
**BOOTH MUSEUM**  
6pm £15, members £10  
An exclusive look into the rarely seen world of beasts, bugs, birds and bones in our stores on this alternative Valentine's Day tour.

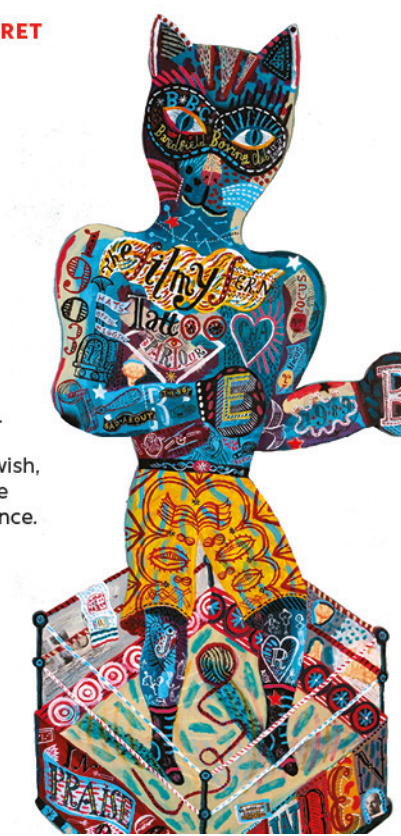
**A KING'S ESTATE: HISTORICAL WALKING TOUR**  
Sat 8 Mar & 12 Apr  
**ROYAL PAVILION ESTATE**  
10.30am £10, members £8  
An exploration of life before the Royal Pavilion on this tour of the Royal Pavilion estate.

**A GARDEN FIT FOR ALL: THE REGENCY REMADE**  
Saturday 12 Apr  
**ROYAL PAVILION GARDEN**  
2pm £10, members £8  
Step into the beauty and charm of a bygone era with an exclusive horticultural tour of the Royal Pavilion Garden with Head Gardener Rob Boyle and Head Guide Dan Cox.

## WORKSHOPS



**THE DARKTOWN CABARET WITH JONNY HANNAH**  
Sat 8 Feb  
**HOVE MUSEUM**  
10.15am-4.15pm  
£100, members £95 (tea/coffee & cake included, please bring your own lunch).  
Ages 16+  
Step into the imaginary world of Darktown Cabaret and craft a miniature stage set for an evening at the legendary Mermaid Café. With paint, collage, and whatever materials you wish, you'll set the stage for the night's cabaret performance.

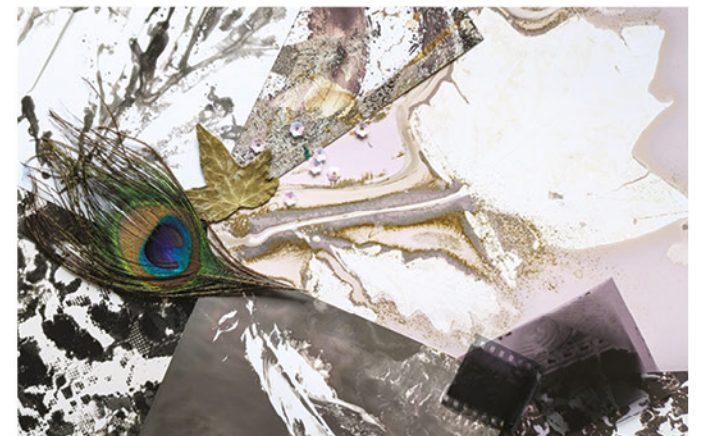


## Preston Manor Reopens



For the first time in five years, Preston Manor reopens with a brand new visitor experience. Explore the world of the Stanford family, where the "upstairs-downstairs" life of Edwardian society comes alive in this remarkable stately home. From glamour to ghosts, discover the intriguing stories that make Preston Manor a place of mystery and charm.

## CHILDREN & YOUNG PEOPLE



**CREATIVE KIDS CLUB**  
Sun 12 & 26 Jan, 9 Feb, 2, 16 & 30 Mar & 27 Apr  
**HOVE MUSEUM**  
10-11am & 11.30am-12.30pm, £10 per child, book in advance at [www.mycrafttribe.com](http://www.mycrafttribe.com).  
Ages 5-14  
Art is for everyone so join in the fun at the Creative Kids Club.

**BOOTH ART CLUB**  
Tue 18 Feb, 8 & 15 Apr  
**BOOTH MUSEUM**  
12-1.30pm & 2.30-4pm £6, members £5 (or 3 tickets for £15, members £12).  
Ages 5-13 (children must be accompanied by an adult).  
Take inspiration from the museum collection in our art & craft workshops.

**HOVE ART CLUB**  
Thu 20 Feb, 10 & 17 Apr  
**HOVE MUSEUM**  
10-11.30am & 2-3.30pm £6, members £5 (or 3 tickets for £15, members £12).  
Ages 5-13 (children must be accompanied by an adult).  
Take inspiration from the museum collection in our art & craft workshops.

**STORYTELLING AT HOVE MUSEUM**  
Mon 17 Feb, 7, 14 & 21 Apr  
**HOVE MUSEUM**  
11.30am-12pm Ages 5 and under, 1.30-2pm Ages 5+.  
Free (children must be accompanied by an adult)  
Come and hear some fun stories in the school holidays.

**STORYTELLING AT THE BOOTH MUSEUM**  
Wed 19 Feb, 9 & 16 Apr  
**BOOTH MUSEUM**  
12-12.30pm Ages 5 and under, 1.30-2pm Ages 5+.  
Free (children must be accompanied by an adult).  
Come and hear some fun stories in the school holidays.

**STORYTELLING AT BRIGHTON MUSEUM**  
Fri 21 Feb, 11 & 18 Apr  
**BRIGHTON MUSEUM**  
10.30-11am & 1-1.30pm Ages 5 and under, 11.30am-12pm & 1.30-2pm Ages 5+.  
Free with Brighton Museum admission (children must be accompanied by an adult)  
Join us in the Archaeology gallery and hear some fun stories during the school holidays.



**TWISTED TALES: GHOST STORY WRITING**  
Thu 20 Feb  
**PRESTON MANOR**  
2-3.30pm £15, members £12.  
Ages 13-16 (children must be accompanied)  
Step inside Brighton's most haunted house for a masterclass in ghost-story writing.



**DROP-IN & DRAW: TOYS AND CRAFT**  
Fri 21 Feb, 11 & 18 Apr  
**HOVE MUSEUM**  
1-3pm Free. All ages.  
Drop-in to the museum and sketch what you see.

**DROP-IN & DRAW: NATURAL HISTORY**  
Sun 23 Feb, 13 & 20 Apr  
**BOOTH MUSEUM**  
1pm-3pm Free, all ages welcome.  
Drop-in to the museum and sketch what you see.

**VICTORIAN COOKERY CLUB**  
Tue 8 Apr  
**PRESTON MANOR**  
10am-12pm £20, members £16 or £30 for 2 siblings, members £24.  
Ages 8-12 (children must be accompanied by an adult).  
Learn the secrets of a Victorian Kitchen and take part in a hands-on cookery workshop creating genuine Victorian recipes.



**PHOTO FINISH: EXPERIMENTAL PHOTOGRAPHY**  
Thu 10 Apr  
**BRIGHTON MUSEUM**  
2-4pm £20, members £17.  
Ages 13-16 (children can be unaccompanied)  
Explore camera-less photography techniques using found objects from the Royal Pavilion Garden.

**PLAY DAYS AT HOVE MUSEUM GARDEN**  
Sun 13, 20 & 27 Apr  
**HOVE MUSEUM GARDEN**  
11am-4pm Free, drop-in. All ages.  
Enjoy outdoor fun using our library of games to play with.

## Become a member today

As a charity, Brighton & Hove Museums relies on the generosity of people like you. As a member you will be supporting local arts and culture at the same time benefiting from:

- Unlimited visits to our sites and exhibitions throughout the year
- Up to four children (18 and under) go free
- A free welcome tour of the Royal Pavilion
- Priority booking and members' prices for events, talks and activities
- Special discounts in our shops and cafes
- Regular updates directly to your inbox

Visit [brightonmuseums.org.uk/membership](http://brightonmuseums.org.uk/membership) for more information.

## VENUES

**Brighton Museum & Art Gallery**  
Royal Pavilion Garden, Brighton BN1 1FN

**Royal Pavilion & Garden**  
Brighton BN1 1FN

**Preston Manor & Gardens**  
Preston Drive, Brighton BN1 6SD

**Hove Museum of Creativity**  
19 New Church Road, Hove BN3 4AB

**Booth Museum of Natural History**  
194 Dyke Road, Brighton BN1 5AA

## HOW TO BOOK

Book tickets online at [brightonmuseums.org.uk](http://brightonmuseums.org.uk) or contact the Bookings Team on 03000 290902 or [info@rpmt.org.uk](mailto:info@rpmt.org.uk) (Mon-Fri)

## ACCESS

If you have any access requirements please contact the Bookings Team who will be able to advise you on 03000 290902 or [info@rpmt.org.uk](mailto:info@rpmt.org.uk)

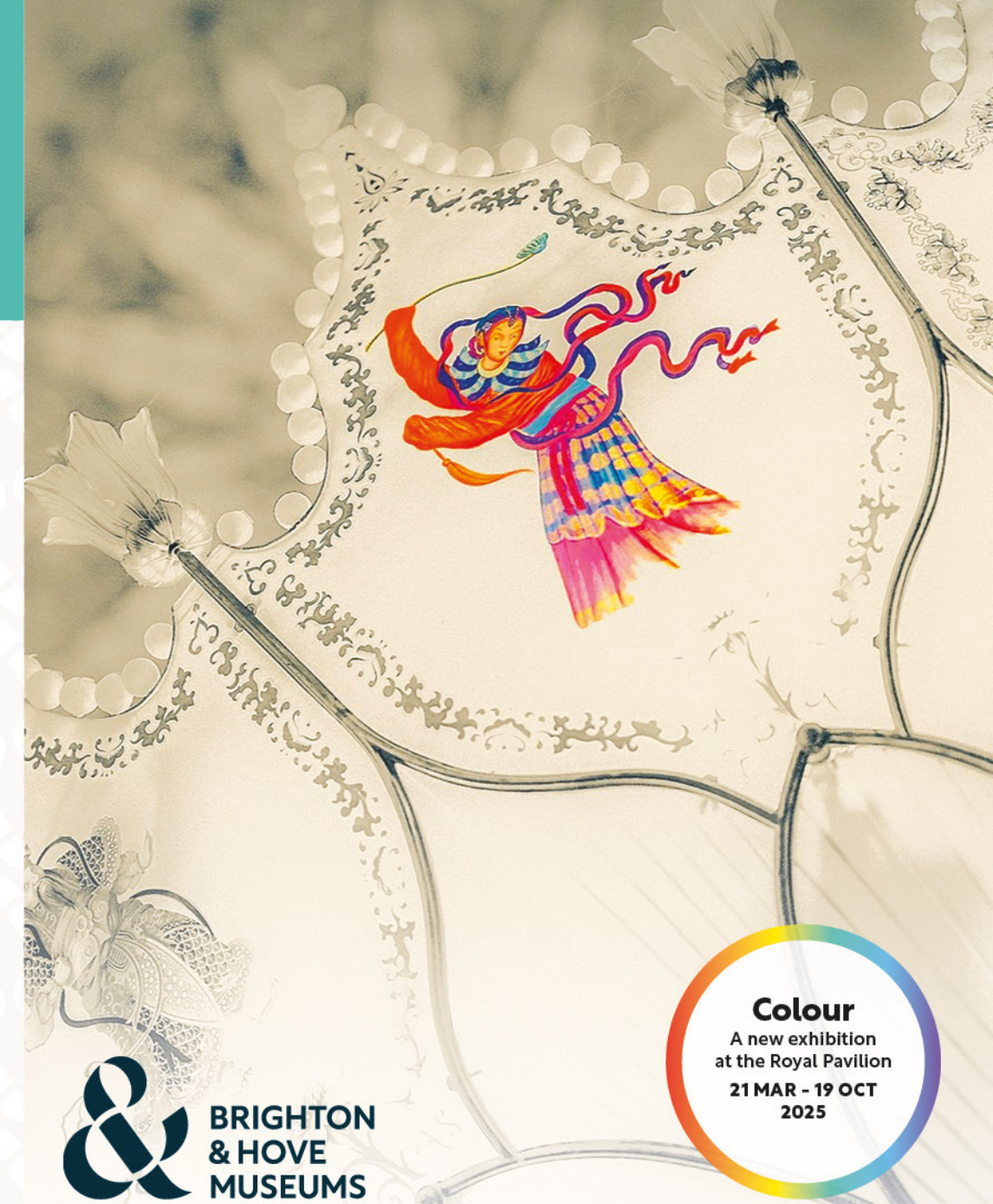
Registered charity number: 1186986



To discover our full programme scan the QR code or visit [brightonmuseums.org.uk](http://brightonmuseums.org.uk)



## What's On Jan - Apr 2025



**Colour**  
A new exhibition at the Royal Pavilion  
21 MAR - 19 OCT 2025

