

All about  
**Bronze Age Hove**



# Bronze Age

What is bronze? What can you think of that is made of bronze? Why do you think we've named a period of history after it?



# Bronze Age?



Why  
bronze?

Bronze = A metal alloy (a mixture of mainly copper and tin)

At this time people started to make their tools out of bronze, instead of just stone

Bronze was particularly useful as it was so strong, much stronger than just copper on its own



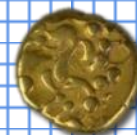
## Palaeolithic

Black Rock  
250,000 years BP



## Neolithic

Whitehawk  
5,700 years BP



## Iron Age

Hollingbury  
2,600 years BP

## Mesolithic

Falmer  
10,000 years BP



## Bronze Age

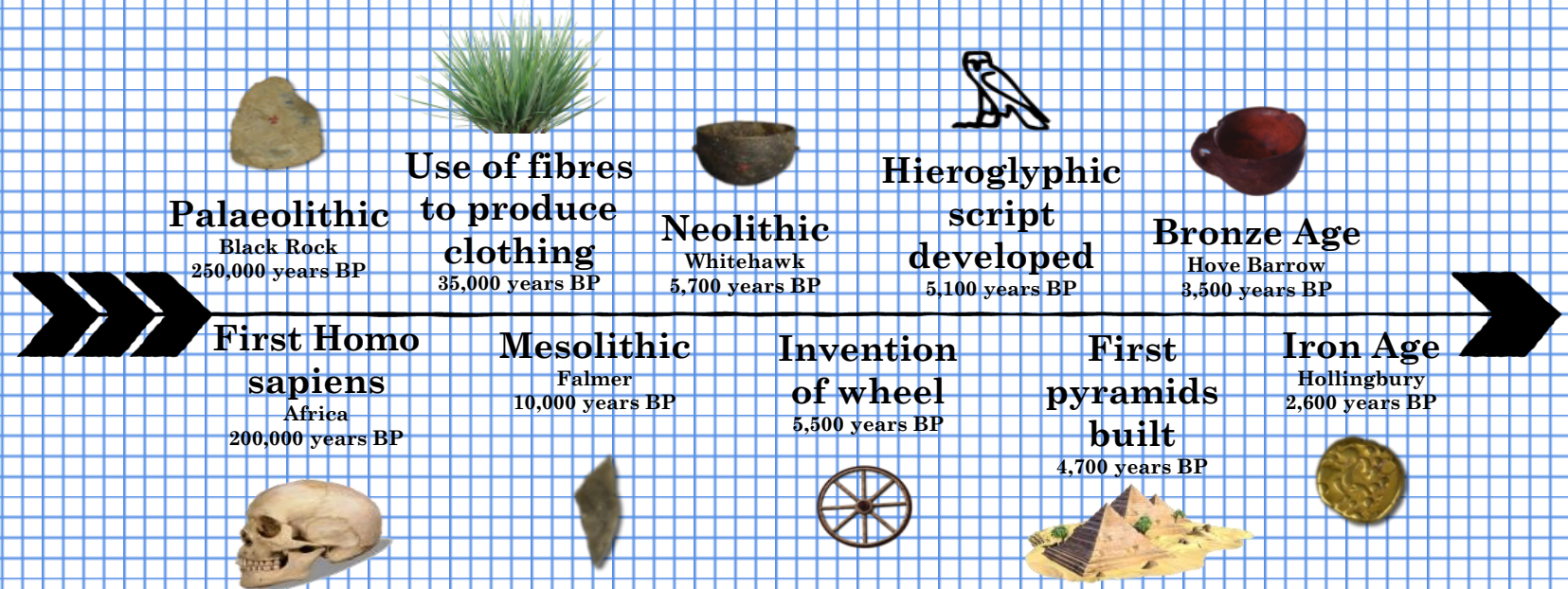
Hove Barrow  
3,500 years BP



The Bronze Age is the first period of time we'll look at that is named after a metal, rather than stone



# How does this period fit into worldwide prehistory?



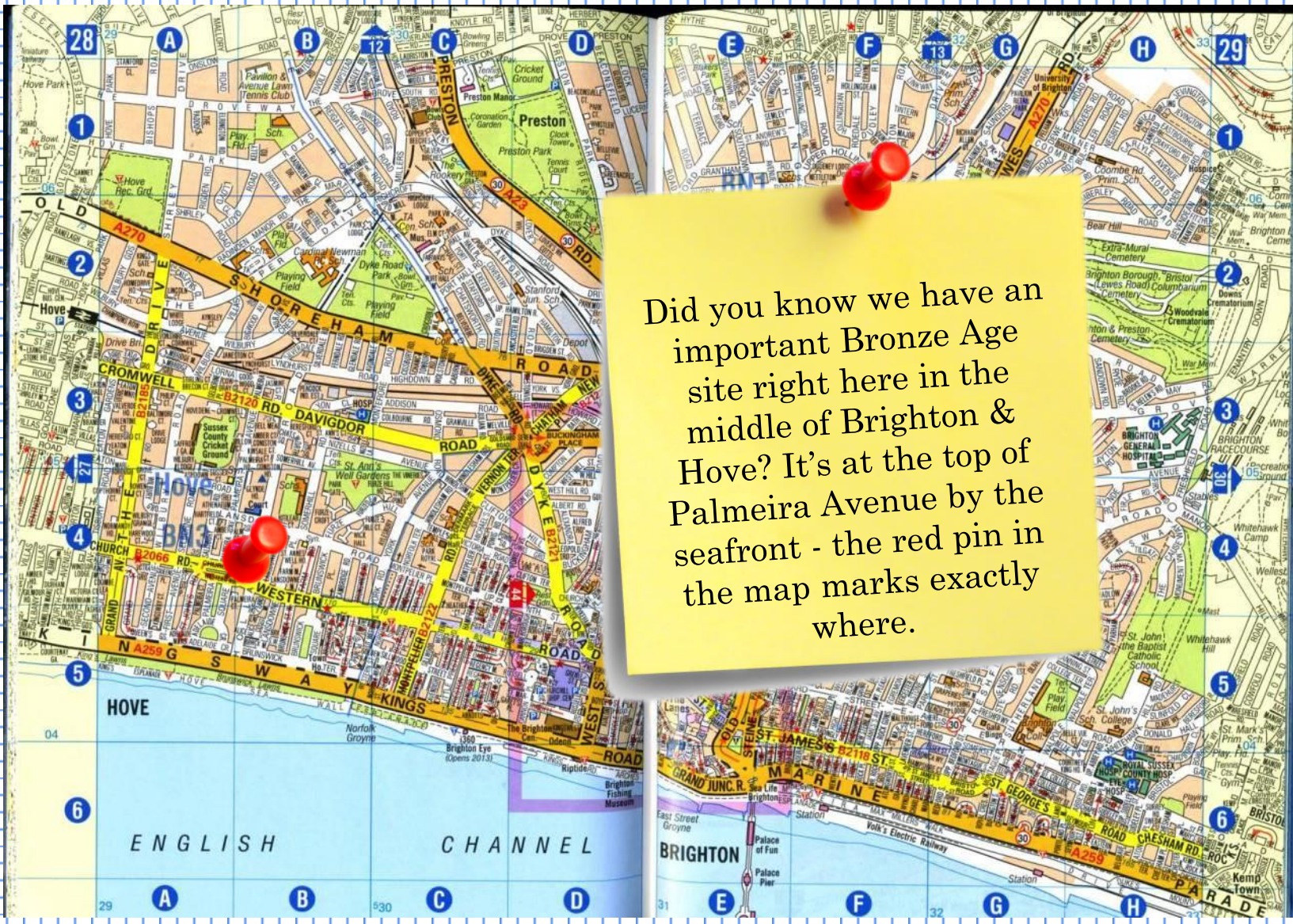
# Find out about the Bronze Age

It's time to use your investigation and IT skills to go on a fact-finding mission about life in the Bronze Age...



1. Where were copper and tin first discovered in Britain?
2. People in Bronze Age Britain start building houses called 'roundhouses' What do they look like? Would you like to live in one?
3. What on earth is a dirk?
4. How did Bronze Age people use wool?



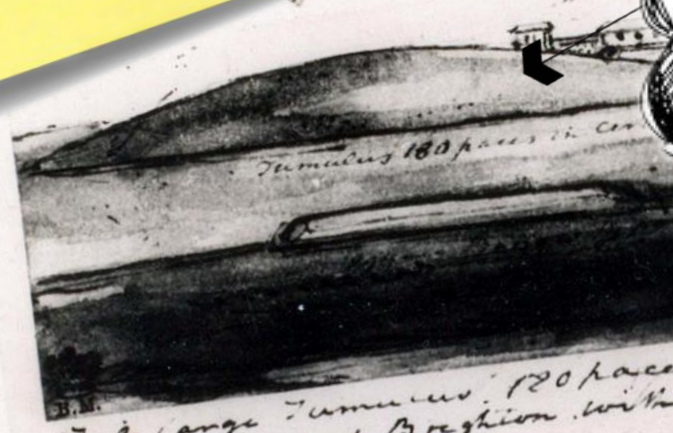


Did you know we have an important Bronze Age site right here in the middle of Brighton & Hove? It's at the top of Palmeira Avenue by the seafront - the red pin in the map marks exactly where.



This sketch from 1821 shows how very different the area would have looked 200 years ago. Does anything strike you as particularly unusual?.

A  
Large Tumulus, in Hoon Parish  
a mound of earth near it appears  
to be a Danish place of interment  
Feb 7 16 1821



The site's secrets were discovered underneath this man-made mound of earth ... can you guess what was uncovered there?

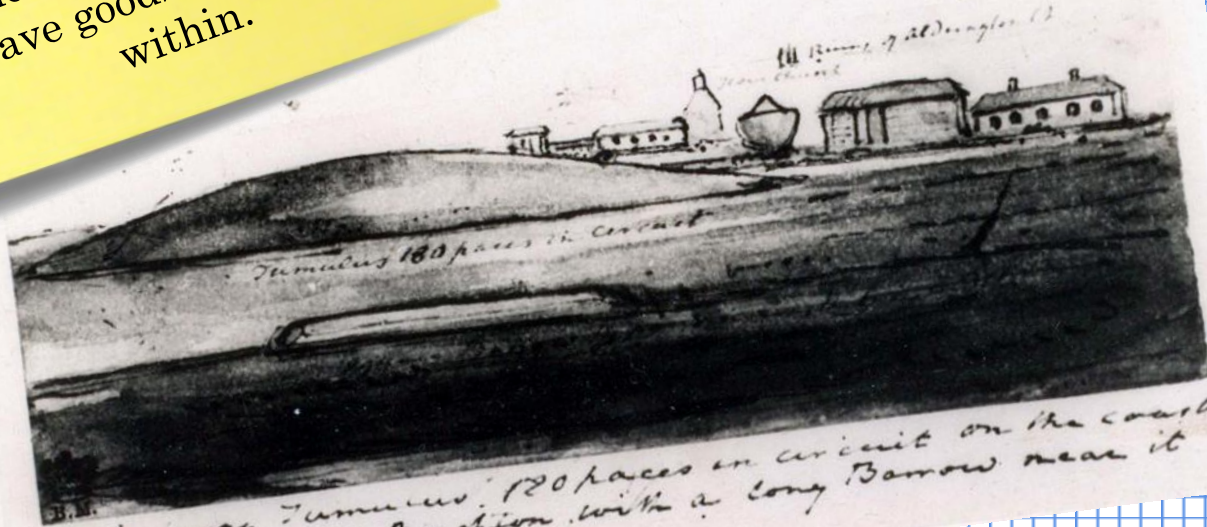
17 a large Tumulus, 180 paces in circuit on  
between Hove & Breghien with a long Barrow





34 years after this picture was drawn, in 1856, workmen building Palmeira Square discovered a large burial mound with several grave goods still intact within.

A  
Large Tumulus, in Hove Parish  
a mound of earth near it appears  
to be a Danish place of interment  
Feb 7 16 1821



17 A large Tumulus, 180 paces in circuit on the coast  
between Hove & Brighton with a long Barrow near it

# So what was found in the grave?

Fragments of  
human bone

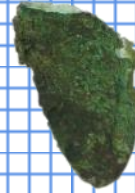
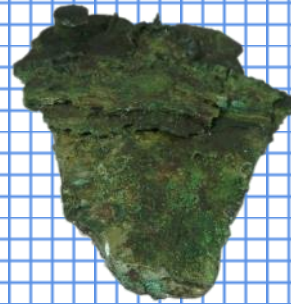
An oak coffin,  
nine feet long

A bronze dagger

A stone hammer

A whetstone (a  
fine grained  
stone used to  
sharpen tools)

An amber cup  
(the star piece  
in our  
archaeology  
collection)



We got a bit confused when excavating the grave. Can you tell which object is which?



Whetstone?  
Amber cup?  
Bronze dagger?  
Stone hammer?





**The stone hammer.**

We're not sure whether this was actually used as anything other than a status symbol



**The bronze dagger.** This is the blade, which would have originally been attached to a bone handle



**The whetstone.**

Look at the hole near the edge – we think it would have been worn as a pendant


**The amber cup.**

Made from a single piece of amber from Northern Europe, this is incredibly valuable





Very little is known about the person who was buried at Hove Barrow, but it is clear that they were very important indeed. Why do you think that was?



They were very rich

Something else?

People thought they had special powers

They were the chief of the Brighton area

They were a well-respected warrior

# The Story Behind the Barrow

Who do you think was buried at Hove Barrow? Create a profile for them using the bullet points on the notepad



Name:

Age:

Occupation:

Interests:

Family:

Biggest fear:

Biggest hope:

Best kept secret:

Wednesday 28 September 3500 BP

# BRONZE AGE Today!

## Hove chieftan buried in flowerbed

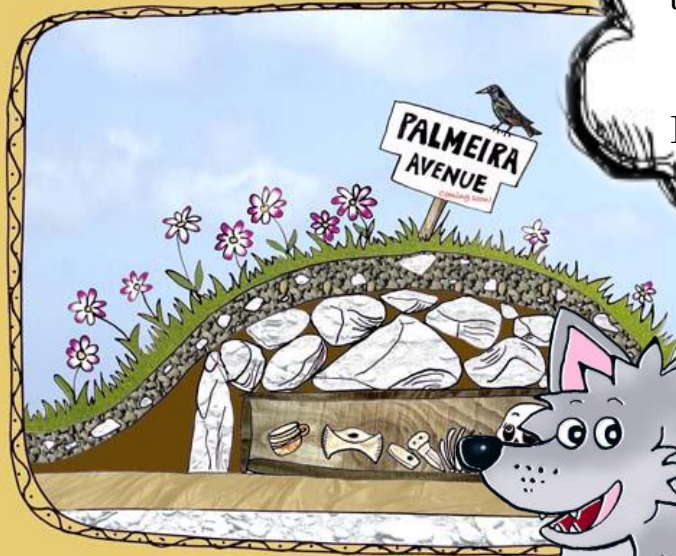
Embarrassed Elders admit to being ignorant of future Council

### **Axel Bushbottom** the Ungracious of Hove

is literally pushing up the daisies in Palmeira Square.

The mound of earth forming his ceremonial burial barrow was very unceremoniously wheelbarrowed over the road to fill up the rose beds in the ornamental gardens.


His family still seek compensation but all the items found at the grave (including an amber cup) have ended up in a wonderful local museum (apparently).



What do you think Bronze Age Brightonians would think of Palmeira Avenue now?







What do  
you think  
it is?

This is an  
example of  
another Bronze  
Age object that  
is very  
important to  
Brighton &  
Hove.





It's called a 'Brighton Loop' and is made out of a thick bronze rod. This design has only been found in and around Brighton. We think they were probably bracelets.



Feeling loopy?  
Why not have a go  
at creating your  
own Brighton  
Loop using a pipe  
cleaner?

Next time you're in Hove  
make sure you pop into  
Hove Museum and take a  
look at the amber cup, which  
we have on display there.  
Impress our staff with your  
knowledge of Bronze Age  
Brighton!



Thanks for  
downloading.  
See you soon!



Supported using public funding by  
**ARTS COUNCIL  
ENGLAND**

Thank you to A-Z for the kind permission to reproduce the map on slide 7. Wolves and illustration on slide 15 by Fiona Redford.